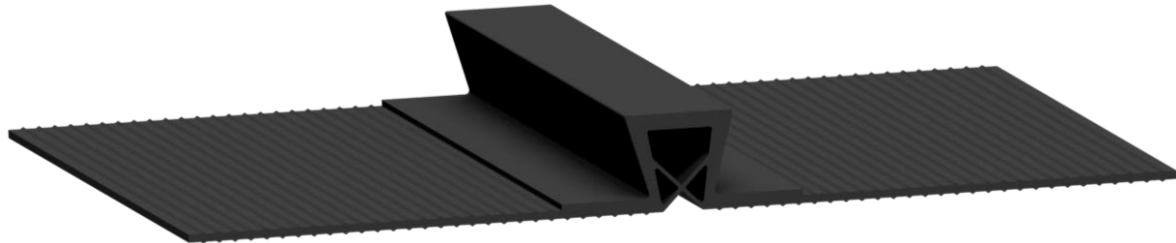


Installation instructions - D 2511 waterstop



Joint design according to installation drawing

- After delivery, the waterstop should be rolled out immediately on a flat surface without overstretching it.
- The waterstop is resistant to hot bitumen and is carefully bituminously glued into the surface seal according to the AIB and installation drawing.
- Pay attention that only high quality bituminous compounds and webs are used. In special cases, the use of bitumen rubber is recommended.
- For installation, the waterstop must be laid out precisely over the middle joint, whereby slight inaccuracies can be compensated for by slight stretching or compression.
- Any height differences of the superstructures must be eliminated beforehand.
- So that the accuracy of fit = position of the middle tube over the joint and the settlement remains at the end, it is recommended to fold one half of the waterstop from the first to be insulated superstructure on the second superstructure. The first superstructure is then covered in the area of the joint with hot bitumen or bituminous layer and the waterstop folded back immediately and pressed into the hot mass. Subsequently, in the area of the first leg, a second bituminous layer is glued on.
- Analogous to this the gluing of the joint strip in the sealing of the second superstructure is carried out.